

PRESENTED FREE
WITH
"PRACTICAL WIRELESS"
JUNE 1965

Practical Wireless Electronic HAWAIIAN GUITAR

PRICE
5/-

PUBLISHED BY GEO. NEWNES LTD., TOWER HOUSE, SOUTHAMPTON STREET, LONDON W.C.2.

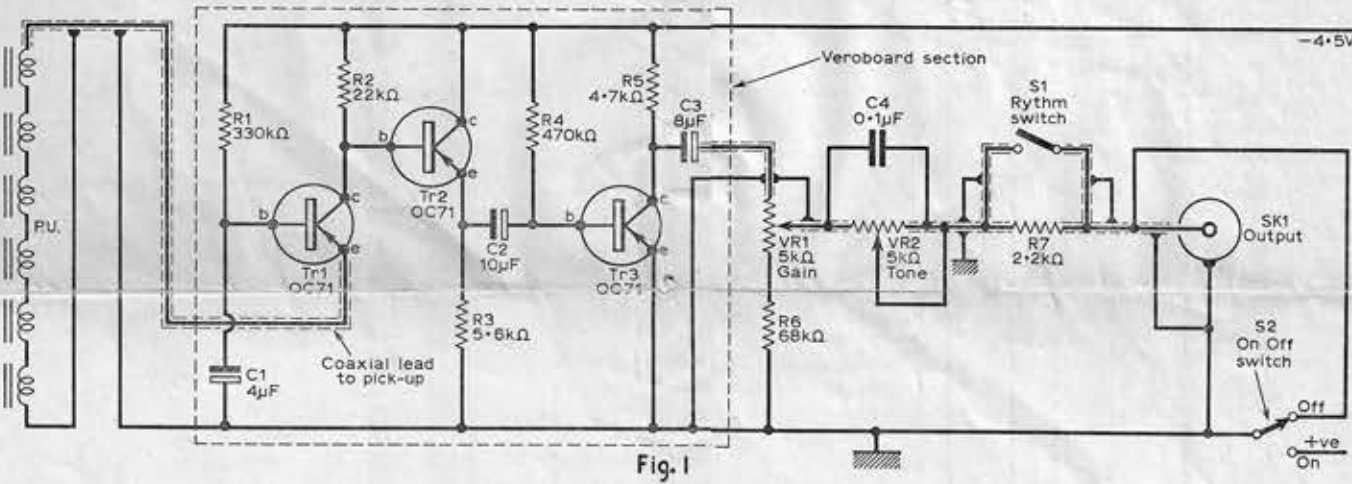


Fig. 1

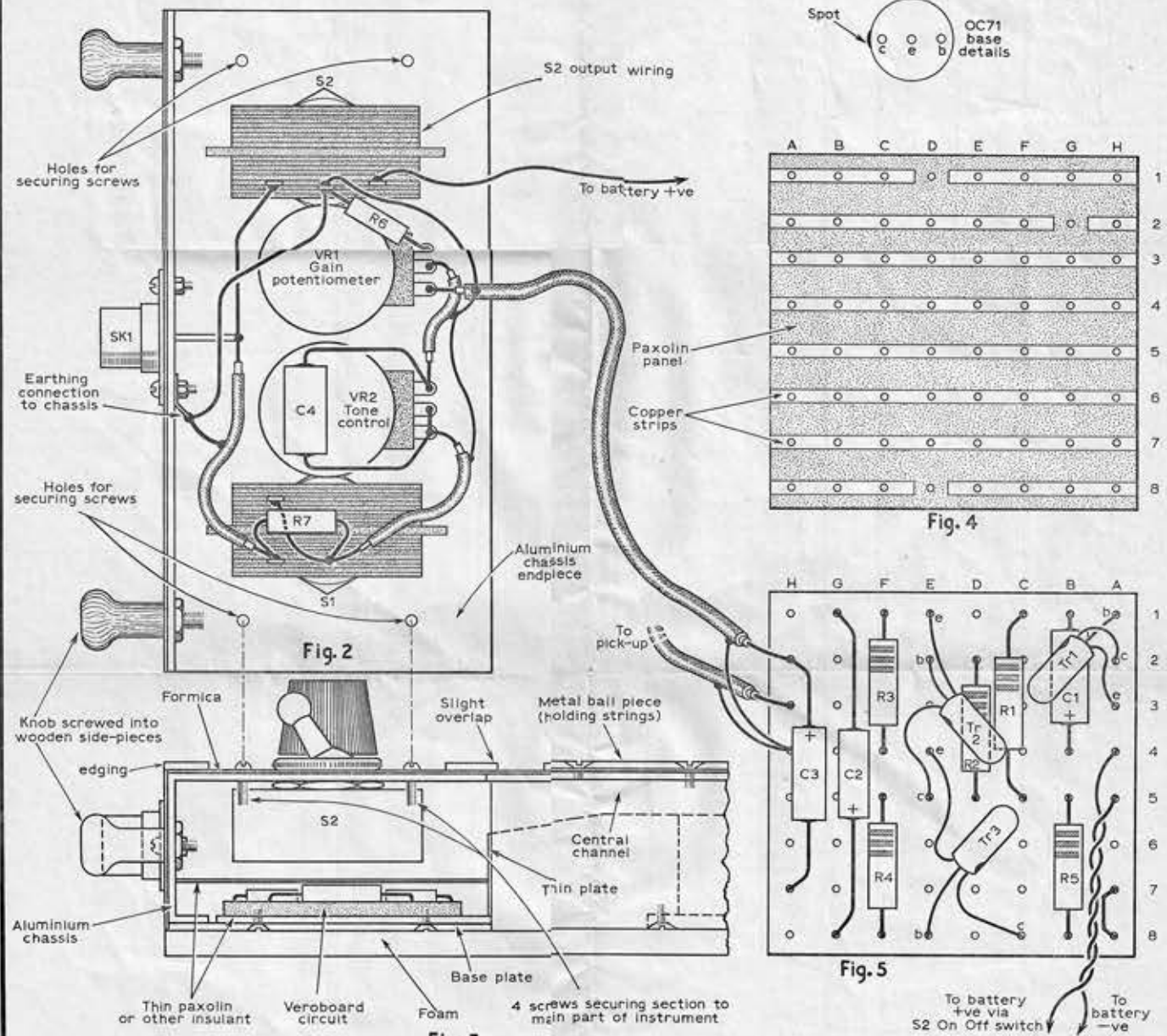


Fig. 3

Fig. 5

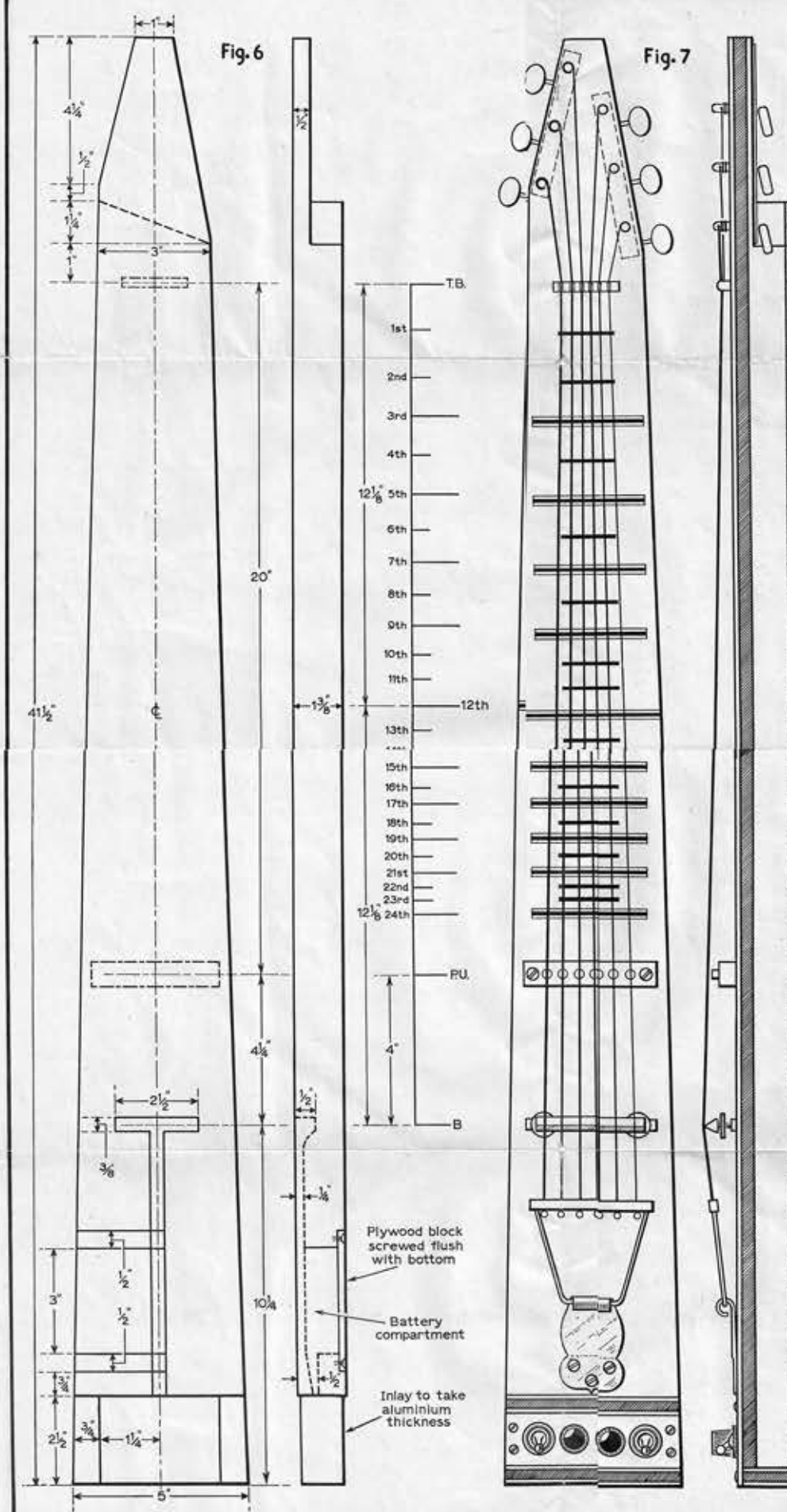


Fig. 6

Fig. 7

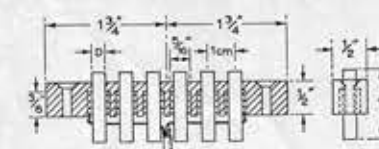


Fig. 8

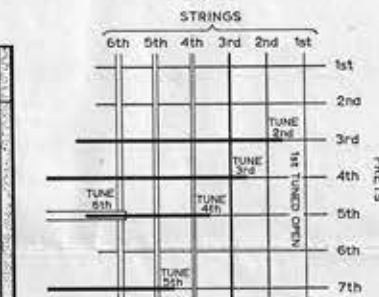


Fig. 9

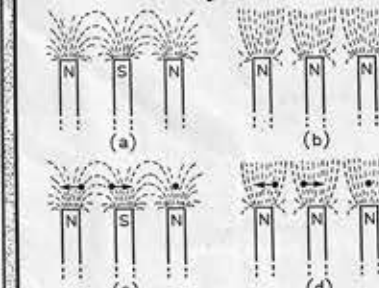


Fig. 10

FRET	DISTANCE FROM T.B.	FRET	DISTANCE FROM 12th
1st	1 1/32"	14th	18 1/32"
2nd	2 1/32"	15th	17 1/16"
3rd	3 1/16"	16th	2 1/2"
4th	4 3/32"	17th	3"
5th	6 1/32"	18th	3 1/32"
6th	7 1/32"	19th	4"
7th	8 1/32"	20th	4 1/32"
8th	8 3/32"	21st	4 1/16"
9th	9 1/16"	22nd	5 1/32"
10th	10 21/32"	23rd	5 1/16"
11th	11 3/8"	24th	6 1/16"
12th	12 1/8"	B	12 1/8"

PU. 4" FROM B

COMPONENTS LIST

- Resistors:**
R1 330kΩ R5 4.7kΩ
R2 22kΩ R6 68kΩ
R3 5.4kΩ R7 2.2kΩ
R4 470kΩ
All 10% 1/4W carbon
- Capacitors:**
C1 4μF elect 6V
C2 10μF elect 6V
C3 8μF elect 6V
C4 0.1μF paper min
- Potentiometers:**
VR1, VR2 5kΩ lin. carbon
- Transistors:**
Tr1, Tr2, Tr3 OC71
- Miscellaneous:**
S1 Single pole on/off
S2 Single pole 2-way (see text)
SK1 Coaxial chassis-mount socket
Battery, 4.5V Ever Ready 1289, Veroboard, 2in. x 2in., 36 2-w.g. copper-enamelled wire, 6 magnets, Coaxial cable (microphone type), 2 control knobs, Brass block 3/4 x 1/2 x 1/2 in., 4in. length of 6in. x 1/2in. (final measurement when planed) soft wood, Formica 4 x 1in. 5yds. edging tin, width flat, Hawaiian guitar strings (Cathedral), Adjustable metal bridge and upper bridge, Tail-piece, One pair of geared winding keys, Plectrum, Steel bar, Pick pipes.